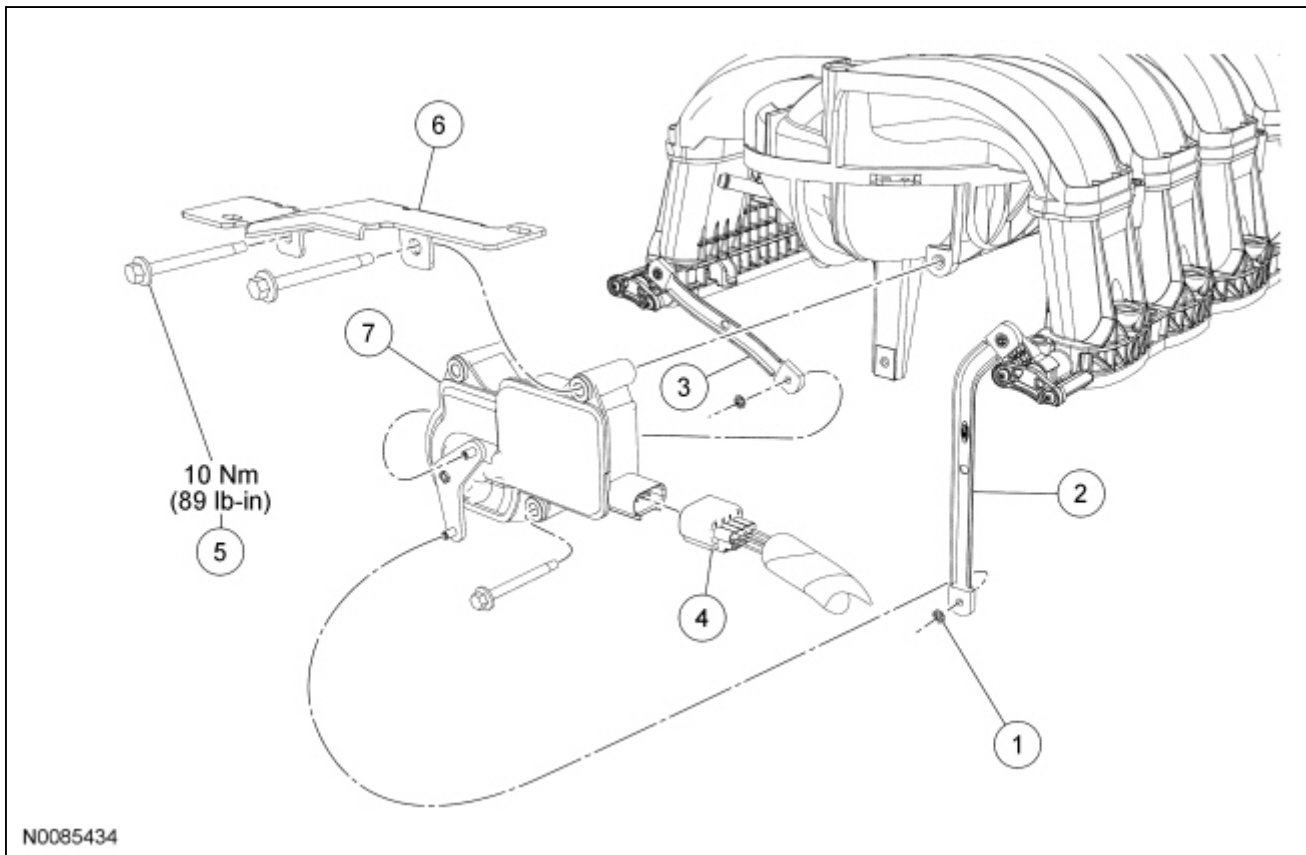


Charge Motion Control Valve (CMCV) — 4.6L (3V)



Item	Part Number	Description
1	W710420	E-clip (2 required)
2	9S523	RH Charge Motion Control Valve (CMCV) linkage
3	9S523	LH CMCV linkage
4	14A464	CMCV electrical connector
5	W708165	CMCV bolt (3 required)
6	—	CMCV bracket
7	9G730	CMCV

Removal

1. Remove the intake manifold. For additional information, refer to [Section 303-01B](#).
2. Remove and discard the 2 E-clips and disconnect the RH and LH Charge Motion Control Valve (CMCV) linkages from the [CMCV](#).
3. **NOTE:** Bent shaft or damaged components will require the intake manifold to be replaced.

Rotate each [CMCV](#) shaft by hand to verify that they do not stick or bind.
4. Disconnect the [CMCV](#) electrical connector.
5. Remove the 3 bolts, bracket and the [CMCV](#).

Installation

1. Position the [CMCV](#), bracket and install the 3 bolts loosely.
 - Do not tighten the bolts at this time.
 2. Rotate each [CMCV](#) shaft so that the plates are in the closed position.
 3. Connect the RH and LH [CMCV](#) linkages and install 2 new E-clips.
 4. Tighten the 3 [CMCV](#) bolts.
 - Tighten to 10 Nm (89 lb-in).
 5. **NOTE:** Make sure that the wiring harness is routed away from the [CMCV](#) system.

Connect the [CMCV](#) electrical connector.
 6. Install the intake manifold. For additional information, refer to [Section 303-01B](#) .
 7. Perform the Key ON Engine OFF (KOEO) self test. For additional information, refer to Powertrain Control/Emissions Diagnosis (PC/ED) manual.
-